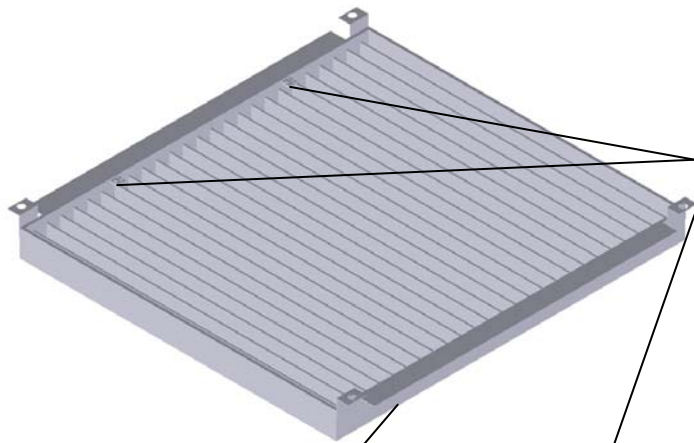


# Tate Drop-In Opposed Blade Damper

Two Zone Damper For DirectAir X2 - 24" Steel Bolted Stringer System



Side flow baffle reduces airflow when set to 0%

Free hanging design allows for easy retrofit or removal of damper

100% variable setting of each damper zone allows for more accurate airflow control to each vertical segment of the rack, while allowing for nearly true 100% airflow

## SPECIFICATIONS

### General Information

- Material – Extruded Aluminum
- Adjustable from top without removing DirectAir panel
- Quarter Turn Adjustment for 0-100% adjustment of damper for each zone
- Drop in fit onto Tate Steel Bolted Stringer system

## UNDERSTRUCTURE OPTIONS

- 2' Bolted Stringer Steel System
- 4' Bolted Stringer Steel System

## AIRFLOW PANEL COMPATIBILITY

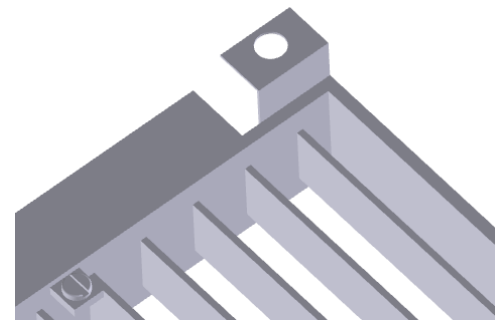
- DirectAir

X2 Opposed Blade Damper w/24" DirectAir Panel			
Static Pressure	100% Open	50% Open	0% Open
0.02	481	280	60
0.04	710	444	106
0.05	822	499	111
0.06	932	529	114
0.08	1107	609	128
0.10	1188	672	151
0.12	1310	735	156
0.14	1419	780	165
0.16	1486	837	183
0.18	1600	891	196
0.20	1679	932	204

\*All values are per zone, total flow will be doubled for entire DirectAir



Quarter Turn Adjustment for each zone precise setting of



Support Tabs allow for suspension from pedestal head for panel independent mounting, optional screw down mounting