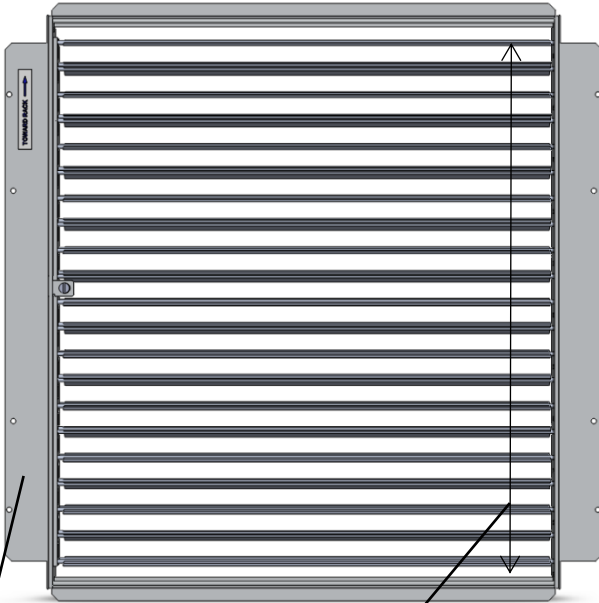
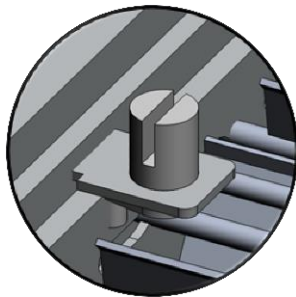


Rack Front Edge

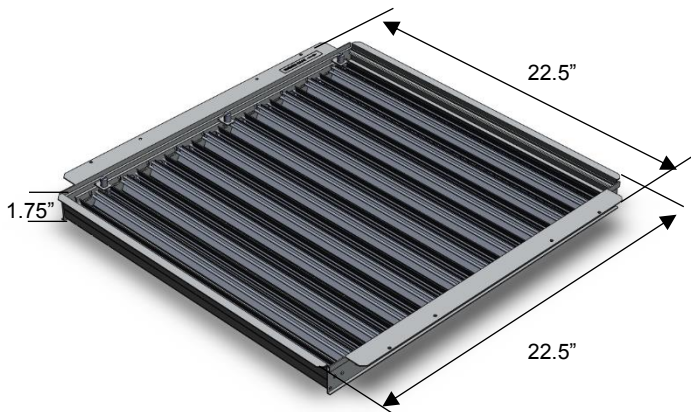


Side Baffles reduce air leakage without pedestal interference

100% variable setting of opposed blades allows for more accurate airflow control, while allowing for nearly true 100% airflow



Quarter-turn damper adjuster accessible through airflow panel



## SPECIFICATIONS

### General Information

- Adjustable from top without removing raised floor panel
- Quarter turn adjustment for 0-100% range of damper
- Field-mounted using self-tapping screws
- Airflow panel-mounted to minimize air leakage between panel and damper
- Supports both 24" and 60cm raised floor systems
- Designed for use with 32% DirectPerf, DirectAire® AI Panels, and GrateAire® Panels
- Made from anodized extruded aluminum
- Damper Weight: 3.8 lbs. (1.7 kg)
- Dimensions: 22.5" length x 22.5" width x 1.75" depth (57.15 cm length x 57.15 cm width x 4.45 cm depth)

## REQUIRED COMPONENTS

- Torque Limited Screw gun or screwdriver
- Screws for 32% Directional Perf ..... (PN#:11525)
- Screws for DirectAire® AI and GrateAire® ..... (PN#:20701)

## AIRFLOW PANEL OPTIONS

- DirectAire® AI (24" and 60cm versions)
- 32% DirectPerf (24" and 60cm versions)
- GrateAire® (24" and 60cm versions)

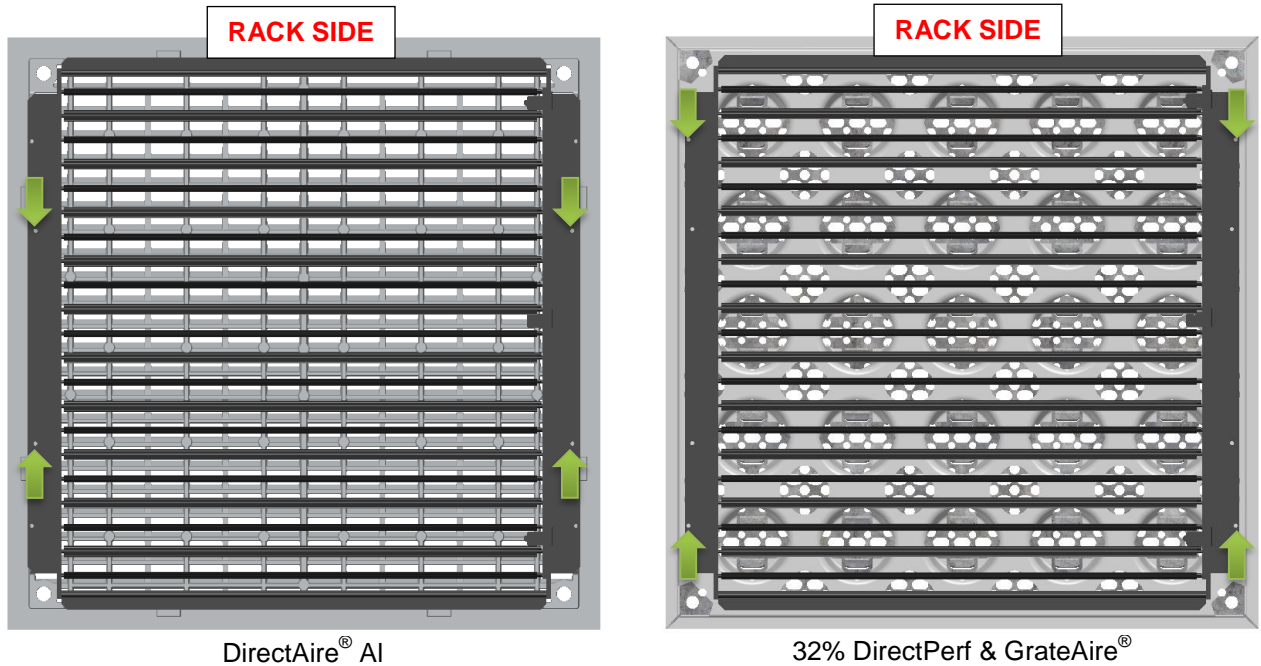
## FINISH OPTIONS

- Clear Anodized Aluminum

## AIRFLOW PERFORMANCE

Static Pressure (inH <sub>2</sub> O)	Opposed Blade Damper w/ DirectAire® AI Panel		Opposed Blade Damper w/ GrateAire® Panel		Opposed Blade Damper w/ 32% DirectPerf Panel	
	100% Open (CFM)	0% Open (CFM)	100% Open (CFM)	0% Open (CFM)	100% Open (CFM)	0% Open (CFM)
0.02	857	128	810	130	480	114
0.04	1293	178	1121	181	693	160
0.05	1422	198	1274	204	770	178
0.06	1546	217	1386	218	822	191
0.08	1745	258	1595	253	963	219
0.10	1951	298	1785	286	1063	255
0.12	2181	330	1913	319	1168	285
0.14	2313	351	2115	347	1260	307
0.16	2422	382	2166	367	1331	335
0.18	2650	394	2340	395	1375	360
0.20	2755	424	2506	422	1509	373

## INSTALLATION



The DirectAire® AI panels utilize the inner 4 holes to mount the Opposed Blade Damper. Please ensure the airflow panel and OBD is oriented correctly in respect to the server rack.

The GrateAire and 32% DirectPerf panels utilize the outer 4 holes to mount the Opposed Blade Damper. Please ensure the airflow panel and OBD is oriented correctly in respect to the server rack.